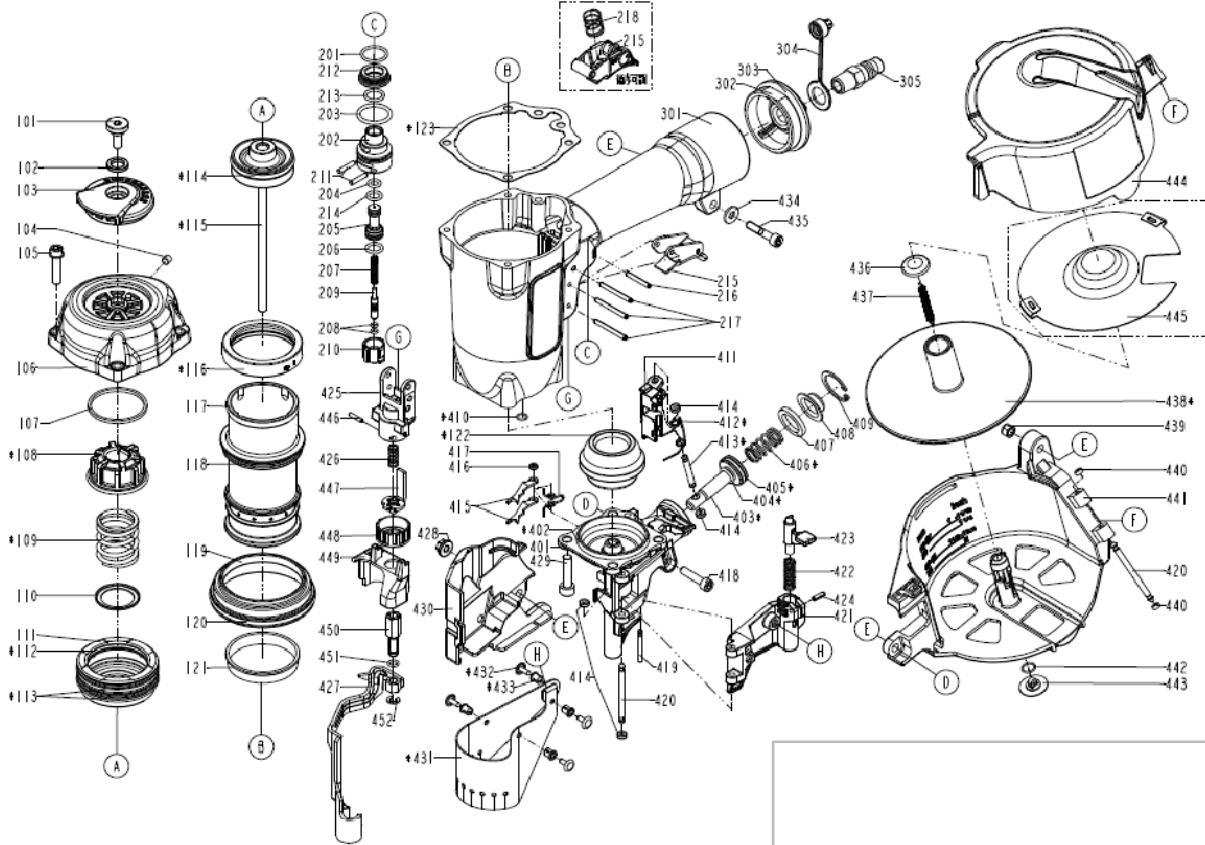


Cloueur C 21/50 P1



Repère	Code	Français	English	Deutsch
101	12B00304	Vis	DEFLECTOR BOLT(3M2353)	Schraube
102	12B00294	Rondelle	RUBBER PAD	Scheibe
103	12B02371	Déflecteur	DEFLECTOR	Entlüftungskappe
104	12B00205	Vis sans tête	HEX.SOC.HD.SCREW	Schraube
105	12B02789	Vis C HC M5-25	BOLT W/FLAT WASHER	Schraube
106	12B02372	Couvercle	CAP	Deckel
107	12B01356	Rondelle	WASHER SEAL	Scheibe
108	12B01346	Amortisseur	SEAL	Ventiloberteil
109	12B01330	Ressort	COMPRESSION SPRING	Feder
110	12B01357	Rondelle	WASHER	Scheibe
111	12B03066	Valve	HD.VALVE PISTON	Ventil
112	12B01964	Joint	O - RING	O-Ring
113	12B01408	Joint	O - RING	O-Ring
114	12B00412	Joint	O - RING	O-Ring
115	12B03067	Piston	DRIVER UNIT	Kolben
116	12B01956	Bague	COLLAR	Dichtung
117	12B03068	Cylindre	CYLINDER	Zylinder
118	12B00415	Joint	O - RING	O-Ring
119	12B03069	Bague	CYLINDER SPACER	Zylinderscheibe
120	12B01831	Joint	O - RING	O-Ring
121	12B00270	Joint	CYLINDER RING	Dichtung
122	12B00342	Amortisseur	BUMPER	Puffer
123	12B00345	Joint	PACKING	Dichtung
201	12B00556	Joint	O - RING	O-Ring
202	12B00532	Corps de servo commande	PLUNGER CAP	Auslöseventil
203	12B00213	Joint	O - RING	O-Ring
204	12B00212	Joint	O - RING	O-Ring
205	12B00502	Servo cmd	VALVE PLUNGER	Auslöseventilunterteil
206	12B00209	Joint	O - RING	O-Ring
207	12B00534	Ressort	SPRING	Feder
208	12B00561	Joint	O - RING	O-Ring
209	12B03070	Tige de servo commande	PLUNGER	Ventilstift
210	12B01779	Couvercle	TRIGGER VALVE HEAD	Auslöseventilführung
211	12B00496	Goupille	PIN	Stift
212	12B03071	Couvercle	COVER-PLUNGER	Auslöseventiloberteil
213	12B00557	Joint	O - RING	O-Ring

214	12B00565	Joint	O - RING	O-Ring
215	12B00326	Gâchette	TRIGGER UNIT	Auslösehebel kpl.
216	12B01106	Goupille	SPIRAL PINS	Spannhülse
217	12B02198	Goupille	SPIRAL PINS	Spannhülse
218	12B00384	Ressort	SPRING	Feder
301	12B03072	Corps	GUN BODY UNIT	Gehäuse
302	12B00355	Couvercle	END CAP	Deckel
303	12B00218	Joint	O - RING	O-Ring
304	12B00020	Bouchon	DUSTY COVER	Deckel
305	T023901	Raccord	AIR PLUG	Anschluss
401	12B03073	Nez	NOSE PIECE	Bodenplatte
402	12B00413	Joint	O - RING	O-Ring
403	12B03074	Piston d'avance pointes	FEED PISTON	Vorschubkolben
404	12B00418	Joint	O - RING	O-Ring
405	12B00406	Joint	O - RING	O-Ring
406	12B03075	Ressort	PUSHER SPRING A	Feder
407	12B00359	Amortisseur	FEED BUMPER	Pufferscheibe
408	12B00376	Couvercle	FEED PISTON CAP	Abdeckscheibe
409	12B00395	Circlips	C - RING	Sicherungsring
410	12B00419	Joint	O - RING	O-Ring
411	12B02378	Avance pointes	FEED FINGER	Nagelführung
412	12B00330	Ressort	FEED FINGER SPRING	Feder
413	12B00375	Goupille	PIN FEED PISTON	Stift
414	12B00368	Anneau de retenue	PU RETAINER	Sicherungsring
415	12B00331	Cliquet d'avance pointe	FIRST STOPPER FINGER	Nagelstop
416	12B00096	Anneau de retenue	URETHANE RETAINER	Sicherungsring
417	12B00332	Ressort	SPRING	Feder
418	12B01147	Vis C HC M5-22	HEX.SOC.HD.BOLT	Schraube
419	12B00365	Goupille	PIN-NAIL STOP	Stift
420	12B00373	Goupille	DOOR SHAFT PIN	Stift
421	12B02380	Porte	DOOR	Klappe
422	12B00334	Ressort	LATCH SPRING	Feder
423	12B00333	Loquet	DOOR LATCH	Verschluss
424	12B00398	Goupille	SPRING PIN	Spannhülse
425	12B00349	Guide de sécurité	SAFETY GUIDE	Führung
426	12B00164	Ressort	COMPRESSION SPRING 5	Feder
427	12B02384	Sécurité A	SAFETY A UNIT	Auslösesicherung
428	12B00403	Ecrou	BOLT CAP	Mutter
429	12B02202	Vis	HEX.SOC.HD.BOLT	Schraube
430	12B02381	Couvercle	SAFETY COVER	Abdeckung
431	12B02388	Protection	MUZZLE PROTECTOR	Kunststoffschürze
432	12B00341	Goupille	FIXED PIN	Stift
433	12B00337	Insert	FIXED RING	Stift
434	12B00206	Rondelle	FLAT WASHER	Scheibe
435	12B00679	Vis C HC M5-25	HEX.SOC.HD.BOLT	Schraube
436	12B01758	Socle	SPRING BASE A	Deckel
437	12B00343	Ressort	PULL SPRING	Feder
438	12B00362	Plateau	SPACER	Nagelteller
439	12B00078	Ecrou	LOCK NUT	Mutter
440	12B00367	Anneau de retenue	SHAFT RING	Sicherungsring
441	12B03065	Magasin	MAGAZINE CASE	Magazin
442	12B00417	Joint	O - RING	O-Ring
443	12B00432	Socle	SPRING BASE	Deckel
444	12B02387	Magasin	MAGAZINE COVER	Magazindeckel
445	12B02389	Plaque	FIX-PLATE	Platte
446	12B00397	Goupille	SPRING PIN	Spannhülse
447	12B02382	Sécurité B	SAFETY B	Federführung
448	12B00391	Molette d'ajustement	ADJUST AXIE	Einstellrad
449	12B00385	Couvercle	COVER-SAFETY	Deckel
450	12B02383	Guide	ADJUST ROD	Einstellschraube
451	12B00409	Joint	O - RING	O-Ring
452	12B00396	Circlips	E - RING	Sicherungsring